



FIRSTEEL

ONE-STOP SOLUTION PROVIDER WITH COMPLETE COMPETITIVE PACKAGE OFFERS

FIRSTEEL BV is dedicated to providing complete piping package solutions for steel products to global industries such as oil & gas, petrochemicals, process engineering, water & power generation, shipbuilding, aerospace and civil construction.

Regardless of the size and complexity, any EPC projects need a combination of detailed technical knowledge of product, manufacturing capabilities & capacities, logistics solutions, administration and co-ordination skills.

Thanks to our extensive worldwide supplier network and knowledge about our supplier's competences and capacities, we can carry out your project requirements successfully as a complete package.

VISION

FIRSTEEL BV aims to be a preferred leading international project material supplier by adding value to its clients in every stage of project executing to keep the schedule and budget.

MISSION

FIRSTEEL BV would achieve its vision

by providing customers cost effective innovative solutions for their project needs and problems as a trusted partner

by serving the clients with wide product range at most competitive price, highly experienced team of technical expertise.

OUR VALUES

- Customer focus and satisfaction
- Working with trusted and reliable partners
- Continuing progress in changing and challenging environment
- Long term sustainable customer and supplier relationships. We are bringing people from all around the world together with a unique solution.

Depending on customer and project requirement, products can be supplied from stock or mill delivery according to ASTM, ASME, API, EN, ISO, GOST and AWWA norms with best service and quality.

STOCK RANGE

FIRSTEEL BV stock includes approx. 30.000 tons of materials as follows:

PIPES AND TUBES

☛ SMLS line pipes A106B / API 5LX42
European norm as per EN 10216-1 standard,
American (ASTM) and Russian (GOST) norms
from ½" up to 24".

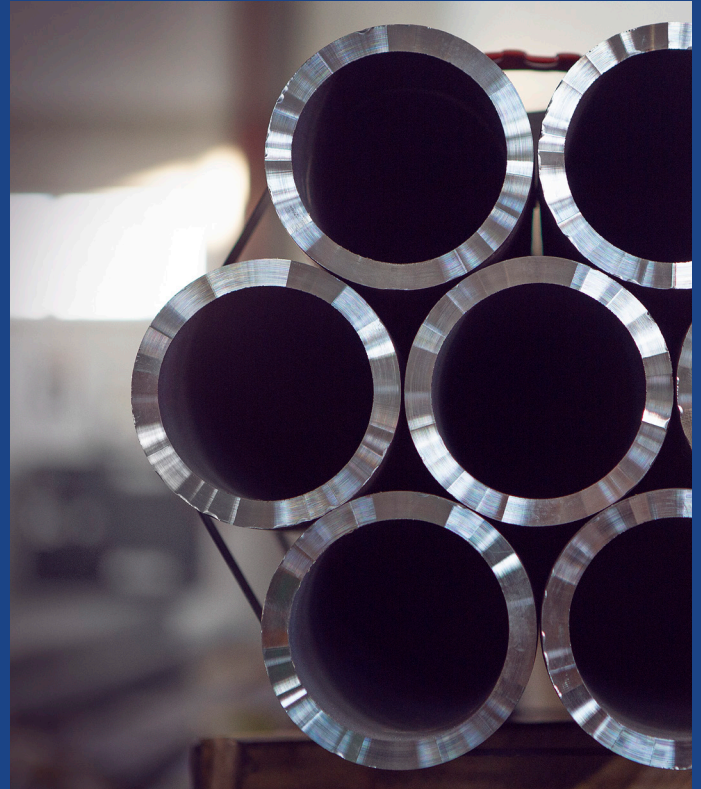
☛ SMLS line pipes A333 Gr.6 / API 5LX52
European norm as per EN 10216-1 standard,
American (ASTM) and Russian (GOST) norms
from ½" up to 24".

☛ SMLS stainless steel pipes ASTM A269/
ASTM A213/EN 10216-5, 316/316L.

☛ Heat exchanger and condenser pipes in
ASME, ASTM standards in A210, A179, A192
qualities.

☛ Alloyed and unalloyed boiler tubes in
the European norm as per EN 10216-2 quality
standard and ASTM norm.

☛ Structural Pipes & Tubulars.



PRECISION & HYDROLIC PIPES AND BARS

☛ Cold drawn honed pipes H8*SRB
E355+SR or C (EN 10305-1 or EN 10305-2) /
St52-3 BK+S or BK (DIN2391 or DIN2393).

☛ Cold drawn seamless hydraulic pipes
E235+N / St37-4 NBK, E355+N (St52-4 NBK)
EN10305-1 or EN10305-1 oily phosphatized or
galvanized surfaces.

☛ Chrome plated bars C45E (DIN CK45),
C50, 20MnV6, 38MnV6, 42CrMo4.

FITTINGS

Butt weld elbows LR, tees, reducers, caps, WPB / WPL6 / WPHY42 from ½" up to 36".

Forged fittings SCRD / SW / OLETS in A105N / A350 LF2.



FLANGES

Forged flanges SO / NPT / WN / LWN / BLIND / SW A105N / A350 LF2 / F42 from ½" up to 36".



COMPLETE SUPPLY RANGE

PIPES AND TUBES

- ☒ SMLS line pipes A106B / A333 Gr.6 / high yield grades from API 5LX42 up to X80.
- ☒ SMLS / EFW pipe stainless steel in Gr. SS316 / 304 / 321 / 347 / 904L / duplex / super duplex / ni super alloys (monel, hastelloy, inconel) / titanium grades / copper and copper nickel alloys / aluminum.
- ☒ SMLS and welded alloy steel pipes in all grades (P11, P22, P5, P9, P91, P92).
- ☒ ERW / LSAW / SSAW pipes.
- ☒ Instrument tubing.
- ☒ Heat exchanger tubes.
- ☒ U-tubes.
- ☒ Structural pipes & tubulars.
- ☒ Casing and tubing.
- ☒ CRA clad pipes.



FITTINGS

☒ Butt weld elbows, tees, reducers, caps, barred tees, bends WPB / WPL6 / WPL3 / high yield grades from WPHY42 up to WPHY70 / Stainless steel in Gr. SS316 / 304 / 321 / 347 / 904L / alloy grades WP11, WP22, WP5, WP9, WP91, WP92 / duplex / super duplex / ni super alloys (monel, hastelloy, inconel) / titanium grades / copper and copper nickel alloys.

☒ Forged fittings SCRD / SW / OLETS in A105N / A350 LF2 / SS316 / 304 / 321 / 347 / 904L / duplex / super duplex / ni super alloys (monel, hastelloy, inconel) / titanium grades / copper alloys.

- ☒ Hot tap tees.
- ☒ Split tees.
- ☒ Isolation joints.
- ☒ Instrument tube fittings.
- ☒ CRA clad fittings.



FORGINGS AND FLANGES

✔ Forged flanges SO / NPT / WN / LWN / BLIND / SW A105N / A350 LF2 / high yield grades from F42 up to F70 / SS316/ 304/ 321 / 347 / 904L/ duplex / super duplex / ni super alloys (monel, hastelloy, inconel) / titanium grades / copper and copper nickel alloys / aluminum.

✔ Swivel flanges.

✔ Anchor flanges.

✔ Orifice flanges.

✔ API flanges.

✔ Nozzles.

✔ Spades and spectacles.

✔ Rings up to 8000 mm.

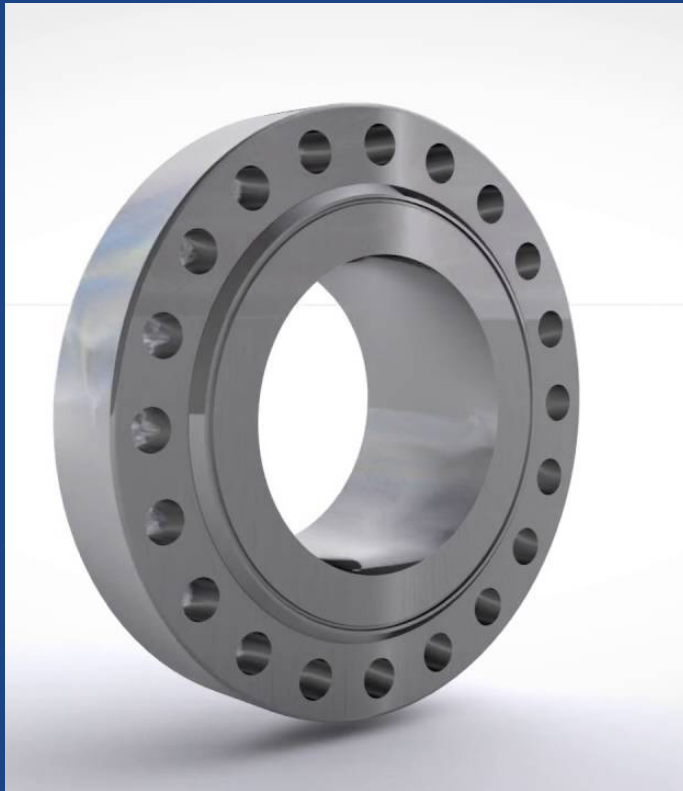
✔ Discs and tube sheets.

✔ Y-pieces.

✔ Shafts.

✔ CRA clad flanges.

✔ All kind of special custom-made forgings as per client drawings.



STUD BOLTS AND NUTS

✔ Stud bolts and nuts as per SO 8.8 / 10.9 / 12.9 / ASTM A307 / F3125/A325M / A490M / A193 B7/L7 / B7M/L7M / B16 / EN 14399-PART 3 & 4 / SAE Gr. 5 & 8 / DIN / BS & ASTM standards.

✔ Hardened washers as per ASTM F436M / EN 14399-5 & 6 / ISO standards.

✔ Load indicating washer as ASTM F959 and BS 7644 available for friction grip bolts.

All fasteners are available in various coatings like black phosphate, zinc plated, bichromate, dacromet, PTFE-fluoropolymer (XYLAN, XY-LAR) and other protective coatings as per client's requirement.



GASKETS AND SEALING PRODUCTS

- Flat gaskets.
- Spiral wound.
- Camprofile.
- Metal jacketed.
- Metallic gaskets.
- Flange insulation kits.
- Packings.
- Sealing tapes.
- Flexible metal hoses.



VALVES

- Cast steel gate / globe and check valves.
- Forged valves in SW / NPT CL.800 / 1500 size 1/2 to 2 inch.
- Gate / globe / check and ball valves.
- Butterfly valves.
- Actuated valves on application.
- Gunmetal / bronze valves for oil / gas application.
- Instrument manifolds and needle ball valves for various applications.

in Carbon Steel / Stainless Steel / Low Temperature / Alloy steel / Duplex / Super Duplex / Ni Supper Alloys (Monel, Hastelloy, Inconel).



COILS, PLATES, SHEETS, BARS AND RODS

In carbon steel / stainless steel / low temperature / alloy steel / duplex / super duplex / ni supper alloys (monel, hastelloy, inconel) / copper and copper nickel alloys / titanium / aluminum.



PRECISION COLD-DRAWN SEAMLESS TUBES

❏ Cold drawn seamless hydraulic pipes E235+N / St37-4 NBK, E355+N (St52-4 NBK) EN10305-1 or EN10305-1 oily phosphatized or galvanized surfaces.



HONED TUBES

❏ Cold drawn honed pipes H8*SRB
E355+SR or C (EN 10305-1 or EN 10305-2) /
St52-3 BK+S or BK (DIN2391 or DIN2393).



CHROME PLATED BARS

❏ Chrome plated bars C45E (DIN CK45),
C50, 20MnV6, 38MnV6, 42CrMo4.



**We are looking forward to receive your valuable enquiries, pertaining to products we offer,
to enable us to serve you for your valuable requirement.**

Eerste Weteringplantsoen 8 1017 SK Amsterdam The Netherlands

T: +31 (0)20 2111 888

F: +31 (0)20 2111 800

www.firsteel.nl

info@firsteel.nl

**Dubai Office: Office 2203, JBC 2 Tower, Cluster V
Jumeirah Lake Towers, Dubai – UAE**

T: +971 4 5681923